

Mallorca Photography Workshop and Tour

10th April to 17th April 2010

Pollença is situated in the far north corner of the island of Mallorca (Spain), near Cap de Formentor and Alcúdia, and it is considered one of the oldest municipalities on the Spanish Mediterranean.

It was founded in the 13th century around 6 km from the coast in an effort to avoid pirate attacks.

Most houses were built in the 17th and 18th centuries and many streets are very narrow and compact, a leftover from the medieval era. The central square, called Plaça Major, has numerous outdoor cafés and is dominated by a large 13th century church

Església de Nostra Senyora dels Àngels (Our Lady of the Angels) which was built by the [Knights Templar](#). One of the town's most distinctive features is the 365-step stairway north of the square; this leads up to a chapel on top of the hill known as Calvary.



We will be using the old town of Pollença as our base for the Photography workshop tour.

About the workshop

This tour workshop offers daily photography opportunities, group discussions and field demonstration. What's more, spouses and partners can also join you on this field trip as a short summer getaway.



A perfect opportunity for you to improve your photography skills and come back with great photographs.

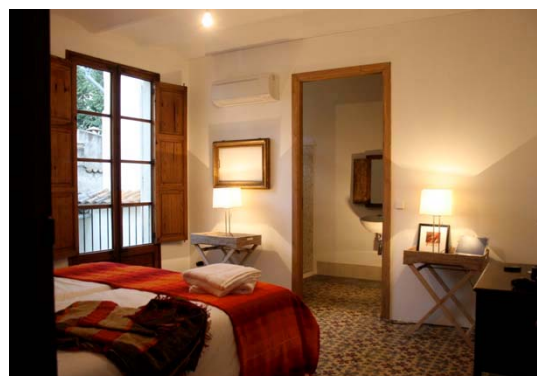
The program is organised such that the photography is done most early mornings and late afternoons. Your travel companions will be spared the early morning wake-up call! In between that you will have free time to explore places on your own or with your partners. In addition, there will be some activities that your partners can join in as part of the group (e.g. during meal breaks and some excursions), if they wish.

The workshop will start with the group meeting up in the Mallorcan town of Pollença on the island of Mallorca. The town is located about 45minutes from the international airport of Palma. For the photographers, Day 1 begins early Sunday morning where we will explore and shoot in the town of Pollença.

Participation fee

The participation fee for the week long workshop is EUR880 for photographers based on twin share.

- Single supplement. Add EUR250 for the week (subject to availability)
- Travel companion supplement. Add EUR350 for the week (subject to availability)
- Private meet and transfer from/to airport EUR25 per person (subject to availability)



The participation fee includes :

- The organisation of the workshop and support in delivering the necessary information
- The photography workshop sessions and field instructions.
- Transport to the photography locations.
- Same sex twin sharing 7 nights accomodation and simple breakfast.
- Light refreshments. First night welcome drinks & tapas and last night drinks.

What is not included :

- All international and local travelling, meals, accomodation and personal expenses.
- Personal accident, injury, travel and cancellation insurance.
- Travel companion(s) expenses.

Skill level required

This photography workshop is suitable to those who have previously participated in either the Basic Photography workshop, Practical Workshop or have good reasonable photography knowledge (using camera in manual mode, good understanding about exposure) and would like to practice more or bring their knowledge to another level.



Workshop information

In view of location, facility restrictions and the different experience levels of photographers, it is challenging to formulate a workshop based on specific topics.

This workshop is more of a hands on field experience. Participants should have some basic photography knowledge. Photographers will be working in mini groups. My role will be moving in between the groups to offer suggestions, answer questions and do field demonstrations. I will also be leading photographers to the locations.

There will also be opportunities for private 1 to 1 discussion with me about your work and ideas if you wish.



Group discussions and image review will be organised with a projector. It will be ideal if you had your laptop along for personal image viewing and editing. In anycase, there will be 1 group laptop available.

Flexibility to changes will be required on the part of the participant and travel companion(s) as schedule and situations may have to be adapted to suit actual local conditions.

Travelling Companions (Spouse and Partners)

We will be shooting mostly early mornings and late afternoons. So, if you wish, you can indulge in your own personal activities while the workshop is not in session.

If you wish, your companion can join you for this trip. The room supplement is EUR350 including a simple breakfast (subject to availability). However, bear in mind that due to space restrictions in transport, they may not be able to join you while we are out on field trips. Moreover, if they do, they will probably feel out of place with a group of photographers.

FAQs

HOW DO I MAKE FLIGHT, LOCAL TRAVEL ARRANGEMENTS?

My role is Photography Workshop facilitator. However, I will provide as much information as possible about making your travel arrangements. All bookings have to be made directly to the suggested suppliers or you could choose your own.

Flights – Brussels Airlines. It is recommended that you book with them as they fly once a week from Brussels to Palma. From the airport it is 45mins to the town of Pollenca by taxi (+/- 70EUR). Grouped airport transfer might be available at EUR25 per person/oneway. If this is of interest to you, please indicate it on your participation form.

INFORMATION ABOUT ACOMODATION?



We will be staying in a beautiful recently renovated 2 storey finca town house. It is located only a few minutes walk from the centre and yet secluded enough for privacy.

It has a spacious living room, a large kitchen, a roof terracotta terrace, lots of open and private space, clean modern bathrooms, air-conditioning/heating and free WIFI access. It also has a swimming pool and garden for alfresco dining.

Expectations from participants.

As we will be living as a group, tolerance is expected from all participants to cultural and character differences.

Participants are expected to help in maintaining the general cleanliness of the place which includes some light chores.



CAN I HAVE A SINGLE ROOM?

Limited single rooms are available at a supplement of EUR250 for the duration of the stay. Please indicate this preference on the participation form.

DO I REALLY NEED TO BRING MY LAPTOP?

Not a requisite, but will be great if you do. Having your own laptop means you can work on your images at your own free time rather than sharing the group laptop (my laptop) with a restricted time limit.

DO I NEED TO BE WITH THE GROUP ALL THE TIME?

Except for the group workshop and field trips, you are free to do what you like. There will be group dinners but you can do your own thing.

CAN MY TRAVEL COMPANION(S) JOIN ME DURING THE GROUP WORKSHOP FIELD TRIPS?

Probably not due to the limited places in transport. First of all, they will be bored to death waiting and walking! Plus a possible distraction to you and for the others.



ARE CHILDREN ALLOWED TO JOIN?

No, unfortunately not. As we are living in a shared living space for a week, the workshop is not structured to have children around.

WHAT IS THE GROUP SIZE?

Maximum 8 Photographers. Excluding partners.

CAN I GET PRIVATE 1 TO 1 DISCUSSION?

Yes. There will be several slots of 20 minutes available for private discussion of your work during the entire workshop. You just need to put your name on the list.

MAYBE THIS WORKSHOP SOUNDS TOO BASIC OR UNSTRUCTURED FOR ME?

As mentioned, due to location challenges and different experience levels it is hard to structure a workshop. I will provide as much as possible attention to individual needs rather than on a group level. If there was any common subject that I will be concentrating on is **Exposure, Composition and Getting the shot right**. If there is

anything specific you wish to be included as a point of discussion, you can always let me know in advance. If feasible, it can be included.

I AM NEW TO PHOTOGRAPHY. CAN I JOIN THIS WORKSHOP?

This workshop will not be suitable for you.

CAN I EXTEND MY STAY AFTER THE WORKSHOP?

Yes you can. You just need to make the separate arrangements with a local hotel and airline company.

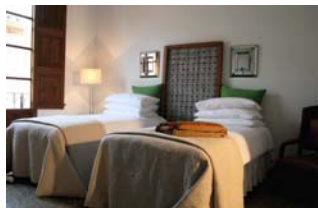
WHAT ARE THE CHILL-OUT OPPORTUNITIES ARE AVAILABLE?

- Turquoise-green clear sea and beaches! Might be a bit chilly for a swim that time of the year – but who knows!
- Apart from the early morning, late afternoon field trips and group discussions (optional), the rest of the day belongs to you.
- Car rental. Visits to nearby towns.
- If the group wishes, we can charter a boat to visit secluded coves for swimming and scuba diving activities.
- Great restaurants.
- Or just chill out in at the frinca's swimming pool, garden, rooftop terrace!



HOW DO I MAKE A BOOKING FOR THE WORKSHOP?

Complete the attached participation form and return it. You will be requested to make a 50% non-refundable deposit. In anycase, the latest you can reserve is **Friday, 15th January 2010**. The earlier I know that a minimum number of participants will sign up, I can send the information out so everyone can take advantage of booking your flight arrangements early to have cheaper fares and accomodation.



WHAT IS THE COST OF AIRFARE?

The information is an indication of current levels.

Airfare on Brussels Airlines www.brusselsairlines.com

Brussels – Palma SN3765 departing 10th April at 16.40 arriving 18.50 and returning Palma - Brussels SN3766 departing 17th April at 19.30 arriving 21.40 is EUR350.28 (all taxes and airline charges inclusive). Prices may change..... Brussels Airlines operates once a week on Saturday to/from Palma.

Other possibilities is leaving from Brussels or other major cities in Europe to Barcelona and connect by boat or flights to Palma.

Needless to say, the earlier you confirm your participation, the earlier the group can be organised and everyone can benefit from a cheaper airfare if booked in advance.

WHY CAN'T WE BOOK EVERYTHING THROUGH YOU AND WHY CAN'T WE GET A GROUP RATE?

For legal reasons in Belgium, if you book through me, I have to use a Belgium travel agent. Plus, the cost will be higher as the agent will make a commission from the booking. In anycase, there is no difference between a group or individual air fare.

CAN I CANCEL AFTER PAYMENT HAS BEEN MADE FOR THE WORKSHOP?

You will be given a deadline to make payment. Once payment has been made, no refunds will be made for cancellations for whatever reasons. It is suggested that you sign up additional insurance to cover any cancellations (including but not limited to 3rd party suppliers, personal travel and accident insurance). As the workshop group is small, the economics of organising the workshop is based on achieving a feasible group size of 6 photographers.



A full refund of the workshop fee will be made before departure if it is cancelled due to force majeure or insufficient number of participants. Once travel commences, refunds cannot be made due to force majeure.

WHAT'S THE WEATHER LIKE IN MALLORCA IN APRIL 2010?

Temperature around 21 degrees celsius and sunny.

SUGGESTED PACKING LIST

- Camera(s), lenses and memory cards (obviously!), external flash unit if you have one.
- A portable harddrive if you have one to back up your images
- A USB key incase you are transferring images from my laptop so you can back up your images.
- Tripod if you have one as you will need it during sunsets and night shoots. There will be 1 group tripod (mine) but it has be shared with all.

- A flash light
- A day bag or camera bag that you can sling over your back or shoulder.
- A laptop for image editing and review.
- Appropriate clothing for the local weather conditions.
- Have a small day-backpack for your equipment while we are out shooting.
- Pack light and ensure that your bag(s) has got BIG wheels for ease of maovouring over cobbled streets. Remember – there are no taxis. Everything is hand carried!

Marllorca Photography Workshop and Tour

Program

Saturday – 10th April - ARRIVAL DAY

- Arrival in Palma. Make your way to the town of Pollenca.
- 9-10.30pm. Tapas dinner, welcome drinks (included), meet up for introductions and briefing**. Camera and equipment check
- 11pm. Lights out

Sunday – 11th April - WORKSHOP DAY 1

- 07.30-0900. Morning photography. We'll go out together for our first photo location shooting while the island is slowly lit up by the morning sun and start to acquaint ourselves with the town of Pollenca. Sunday is market day in Pollenca! *
- 0930. Breakfast** (included) and briefing
- 10.30-noon and 15.00-16.00 (optional 1 to 1 discussion. 20mins per participant)*
- Free time and preparation of images for review later.
- 17.00-18.30. (optional 1 to 1 discussion. 20mins per participant)*
- 19.00-20.45. Sunset shoot Formentor*
- 21.30 dinner**

Monday – 12th April - WORKSHOP DAY 2

- 0715-08.30. Morning photography in the Formentor.*
- 0900. Breakfast**. (Included)
- 10.00-noon and 17.00-18.00 (optional 1 to 1 discussion. 20mins per participant)
- 18.00-2000. Group discussion and review of images*
- 2000. Dinner**

Tuesday – 13th APRIL - WORKSHOP DAY 3

- 0645-1000 Soller and the small towns*. Bring along self packed breakfast (included)
- 1100-1200. (optional 1 to 1 discussions 20mins per participant)
- 1500 surprise tour!
- 1900 Dinner**

Wednesday – 14th April - WORKSHOP DAY 4

- 0630-0830. Early morning shoot in Artá*
- 0915 Breakfast** (included).
- 10.00-noon (optional 1 to 1 discussion. 20mins per participant)*
- 1600-1800 Wine yard tour and wine tasting (included)*

Thursday – 15th April - WORKSHOP DAY 5

- Free day!
- Breakfast at leisure till 1000.** (included)
- 1600-1900 Alcudia.* Maybe a bull fight
- 2000 Dinner**

Friday – 16th April - WORKSHOP DAY 6

- 0600-1100. Early breakfast (included). Morning shoot in the city of Palma.** Transport by train at own expense.
- 1500-1730. Selection and preparation of images for presentation/discussion.
- 1730-2030. Presentation and discussion of images*
- 2100. Dinner and Party** (Drinks included)

Saturday – 17th April - WORKSHOP DAY 7

- Breakfast at leisure till 1000.** (Included)
- Free time
- 1300 checkout.
- Have a pleasant stay in Mallorca for those staying on!

*Participants of phototour workshop only

**Spouses, partners, travel companions welcomed to join

During the meals(eg dinner) and in-between breaks, you can choose to join the group or do your own activity.

Unless specified, all meals are at own expense

Private Meet and transfer from/to airport might be if available EUR25 per person/oneway. If this option is of interest to you, please indicate on the participation form.